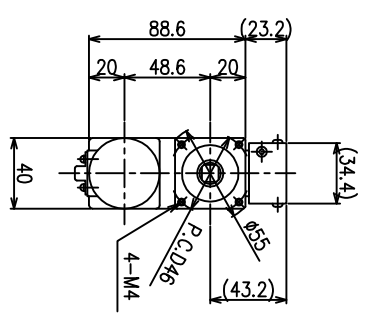
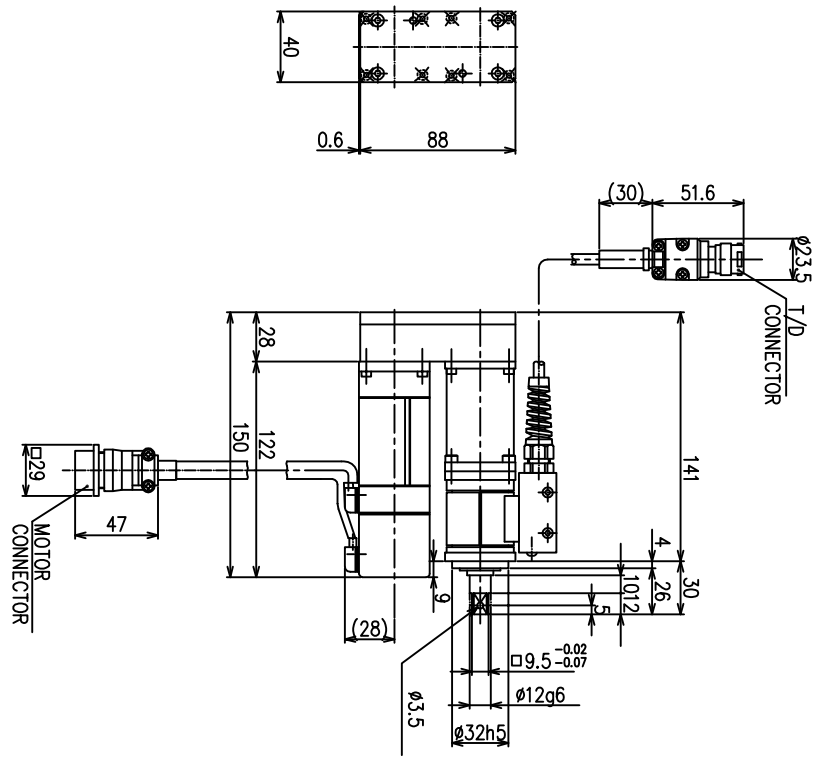


CHANGES			
SYMBOL	BY	REVISION	DATE
-	BMB	TRANSLATED TO ENGLISH	01/07/04



1. FULL SCALE TORQUE - 4.0 KGF.M (39.2 Nm)
2. MAX FREE SPEED - 250 RPM
3. WEIGHT - N/A

TOLERANCE UNLESS OTHERWISE SPECIFIED

INCH .XX=±.01  
 .XXX=±.005  
 .XXXX=±.0005  
 ANGLE=±.5

METRIC .X=±.25  
 .XX=±.127  
 .XXX=±.0127  
 ANGLE=±.5

1. DO NOT SCALE DRAWING.
2. BREAK ALL SHARP CORNERS & EDGES EXCEPT AS NOTED.
3. USE HI-COLLAR LOCKWASHERS UNDER ALL SOC. HD. SCREWS.
4. APPLY LOC-TITE TO ALL SCREWS.

NOTICE OF PROPRIETARY RIGHTS

The design, concepts and engineering detail embodied in this drawing are the property of FEC INC. and are to be maintained in strict confidence; no element or detail of this drawing is to be disclosed nor used without the express written permission of FEC INC.

DESIGN	DETAIL	TITLE
FEC	BMB	TOOL ASSEMBLY DRAWING
CHK'BY	SAFETY OK	FOR A NFT-401RM1-SU
FEC		
DATE	SCALE	
01/07/04	1/2	
SHEET	SHEETS	DRAWING NO.
1	1	NFT-401RM1-SU

FASTENING 51327 QUADRATE DRIVE  
 MACOMB TWP. MI 48042  
 OFFICE: (596) 781-2100