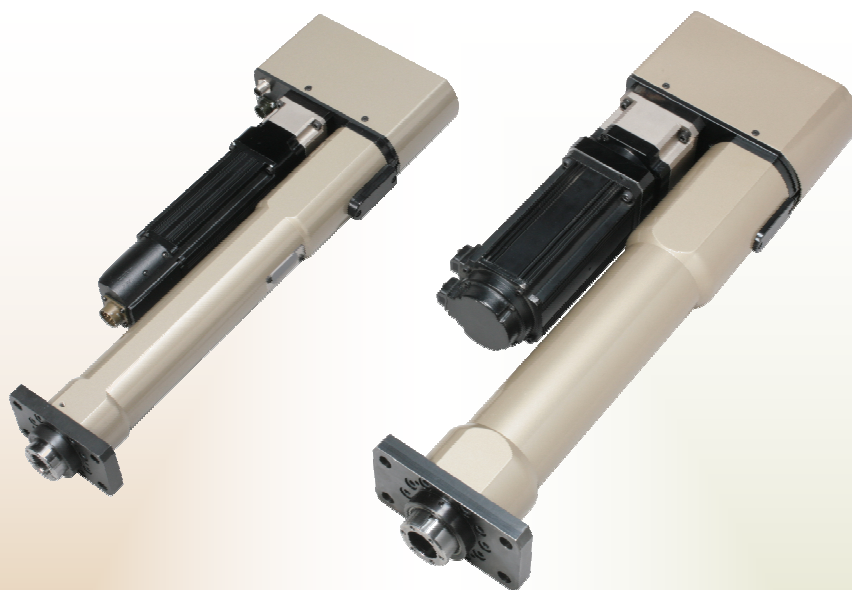


NEW PRODUCT

enFORCE Digital Servo Press

SLIM-LINE SERIES

MAXIMUM CAPABILITY /
MINIMUM FOOTPRINT



Features:

- Offered in 10KN, 30KN and 50KN models.
- Designed for close center-to-center pressing applications.
- 30 ~ 40% smaller and up to 70% lighter than FEC's standard press line.
- Belt driven for quieter operation.
- Standard internal maintenance brake with quick release.

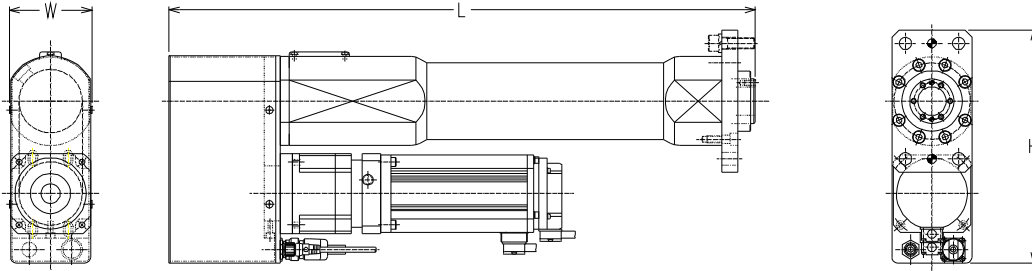


51327 Quadrate Drive Macomb, Mi. 48042 | Phone: (586) 781-2100 | Fax: (586) 781-0044

E-mail: sales@fec-usa.com

| Website: www.fec-usa.com

Specifications



Item	DPS-101R3-20FB	DPS-301R4H-20FB	DPS-501R4H-20FB
Maximum Load	10KN (2,248.1 lbf.)	30KN (6,744.3 lbf.)	50KN (11,240.4 lbf.)
Maximum Continuous Load	2.5KN (562.0 lbf.)	12.0KN (2,697.7 lbf.)	11.5KN (2,585.3 lbf.)
Maximum Speed	222mm/sec.	200mm/sec.	160mm/sec.
Standard Stroke	200mm	200mm	200mm
Distance Repeatability*	±0.01mm	±0.01mm	±0.01mm
Load Repeatability*	$(3\sigma/X) \leq 1.5\%$ (1/2 to full scale)	$(3\sigma/X) \leq 1.5\%$ (1/2 to full scale)	$(3\sigma/X) \leq 1.5\%$ (1/2 to full scale)
Weight	16.4kg (36.2 lbs.)	36.5kg (80.5 lbs.)	62kg (136.6 lbs.)
Dimensions (L x W x H)	575 x 68 x 209 (mm)	660 x 93 x 262 (mm)	760 x 115 x 322

*When load is constant.

Product Flexibility

Simple System Configuration

- Wide range of press solutions from 500N to 200KN
- Space saving controller size allows easy handling & maintenance
- “Build As You Need” modular hardware configuration
- Three controller sizes cover full range of presses
- 32 parameter sets allow assembly of different parts with same press
- Unlimited press positioning within press stroke
- Custom press strokes available

Ease of Use / Set-up

- Windows® based software with user friendly graphical set-up
- Minimal cable connections for easy set-up and maintenance
- “Auto” set-up feature for trouble free start-up

Simplified integration

- Various Fieldbus interfaces available¹
 - * DeviceNet®, Profibus®, Modbus Plus®, EtherNet I/P, CC-Link®, AB Remote I/O® and more
- Main Unit allows connection of multiple presses

Product Traceability, Error proofing

- Part ID (VIN#, Serial#, etc.) information can be imported and married with press data¹
- Store up to 8,322 cycles of press data (with part ID) in controller¹

¹ Main Unit Required

