

NEW PRODUCT

enFORCE Digital Servo Press

# MINI SERIES

224 POUNDS OF ABILITY  
STUFFED INTO A 9 POUND BOX



## Features:

- Extremely small and light weight.
- The “P-type” press is able to press it’s rated load continuously (unlimited hold).
- Only 1 cable required for connection.
- Front or side mountable.
- Belt driven for quieter operation.
- Runs on 180~242VAC 3Ø or 120VAC single phase with optional power supply module.

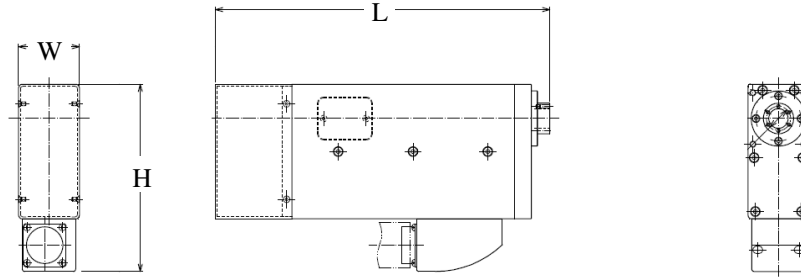


51327 Quadrate Drive Macomb, Mi. 48042 | Phone: (586) 781-2100 | Fax: (586) 781-0044

E-mail: [sales@fec-usa.com](mailto:sales@fec-usa.com)

| Website: [www.fec-usa.com](http://www.fec-usa.com)

# Specifications



Item	DPM-050H1-10P	DPM-011H1-10F
Maximum Load	500N (112.4 lbf.)	1000N (224.8 lbf.)
Maximum Continuous Load	500N (112.4 lbf.)	500N (112.4 lbf.)
Maximum Speed	130mm/sec.	130mm/sec.
Standard Stroke	100mm	100mm
Distance Repeatability*	Less than $\pm 0.02$ mm	Less than $\pm 0.02$ mm
Load Repeatability*	$(3\sigma/X) \leq 3.0\%$ (1/2 to full scale)	$(3\sigma/X) \leq 3.0\%$ (1/2 to full scale)
Weight	4.0kg (8.8 lbs.)	4.0kg (8.8 lbs.)
Dimensions (L x W x H)	275 x 50 x 153 (mm)	275 x 50 x 153 (mm)

\*When load is constant.

# Product Flexibility

## Simple System Configuration

- Wide range of press solutions from 500N to 200KN
- Space saving controller size allows easy handling & maintenance
- “Build As You Need” modular hardware configuration
- Three controller sizes cover full range of presses
- 32 parameter sets allow assembly of different parts with same press
- Unlimited press positioning within press stroke
- Custom press strokes available

## Ease of Use / Set-up

- Windows® based software with user friendly graphical set-up
- Minimal cable connections for easy set-up and maintenance
- “Auto” set-up feature for trouble free start-up

## Simplified integration

- Various Fieldbus interfaces available<sup>1</sup>
  - \* DeviceNet®, Profibus®, Modbus Plus®, EtherNet I/P, CC-Link®, AB Remote I/O® and more
- Main Unit allows connection of multiple presses

## Product Traceability, Error proofing

- Part ID (VIN#, Serial#, etc.) information can be imported and married with press data<sup>1</sup>
- Store up to 8,322 cycles of press data (with part ID) in controller<sup>1</sup>

<sup>1</sup> Main Unit Required

